



## Evaporative Air Cooler

Instruction Manual

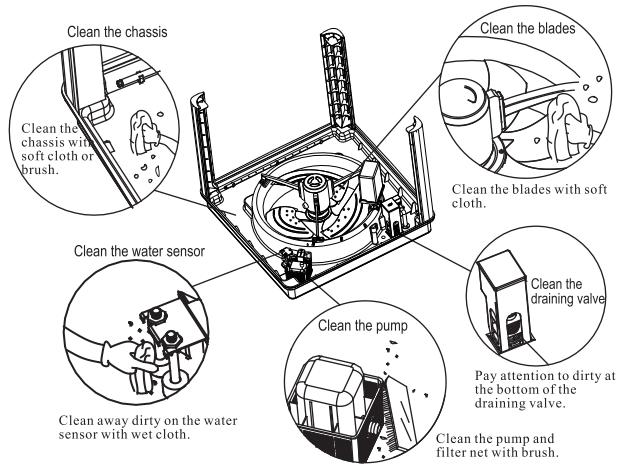
**Save Energy  
Stay Cool !**



[www.megalife.ma](http://www.megalife.ma)

**For Cooler with  
Air Flow 18000 CMH**

The spare parts include chassis, water pump, fan blade and drain valve also need be cleaned 1-2 month, to prevent the blockage and the normal water supply, please refer to below fig.:



## Troubleshooting

Failure description	Possible reason(s)	Suggested solution(s)
No reaction from product when powered on and pressing buttons	Wrong input	Test the voltage and ensure the correct input
	Over current	Restart or change fuse
	Out of connection between controller and machine	Check and reconnect the wire
	Controller failure	Change controller
	Motor thermal protection	Will be normal after 20 minutes
	Motor out of connection	Check the wire connection of motor
Pump is working while can not feel cool air	Thermal relay or contactor failure	Change thermal relay or contactor
	Too small air diffuser	Change air diffuser
	Clogging on pads	Clean or change filter net
	No enough air diffuser	Add air diffuser
	Dry or insufficient water on pads	Check and clean the pump and water distribution pipe
Pump fails to work	Too high room relative humidity	Turn off pump and improve the ventilation
	Water pump thermal protection	Cool down the pump
	Water pump failure	Change pump
	Water pump out of connection	Reconnect pump
Pump works but no water	Shortcut of water level sensor	Change water level sensor
	Clogging in water pump	Clean water tank and pump
	Clogging in water distributor pipes	Clean water distributor pipe

**Note:** The troubleshooting is only for reference and in case of any serious malfunction, please refer to the professional service man.

## Disclaimer

We reserves the right to make alterations to specifications, quantities, dimensions etc, for production or other reasons, subsequent to publication.

The information contained herein has been prepared by qualified experts of the factory.

While we believe the information is accurate and complete, we make no warranty or representation for any particular purposes. The information is offered in good faith and with the understanding that any use of the units or accessories in breach of the directions and warnings in this document is at the sole discretion and risk of the user.

## Preface

Thanks for selecting our product, each of our product is manufactured to ensure the safety and reliability.

To help you get basic understanding and proper operation knowledge for the product, please read manual carefully before the first use of product and well keep it for future reference.

## Safety Instructions



Fail to comply with a “Safety instructions” may cause danger, personal injury or property damage, for which the manufacturer will not be responsible.

For installation and start up follow the technical, law, health and safety requirements in force in the country of destination.

Evaporative air coolers are not intended for use by children and persons with reduced physical, sensory or mental capabilities, or lack experience and knowledge, unless they use the appliance under the supervision of a person responsible for their safety.

Recommended operating conditions:

Room temperature: 18-45°C

Room relative humidity : ≤85%

Atmosphere pressure: 860-1060 mbar

Water temperature: ≤45°C

Water pressure: 1.5-6 bar - corrosion free environment

Do not install the product in proximity of fires and heat sources.

Make sure that the water lines and connections are tight to prevent water leaks and dangerous situations.

In the event of abnormal operation, contact a professional serviceman.

Provide adequate ventilation in the cooled area, to get the best cooling performance.

Do not put objects, loads etc on the top of the units to prevent any risk of damage.

Do not operate the unit without guards, panels, or the cover in place.

Cut off power supply before service, maintenance and repair.

If the power supply cord is damaged, it must be replaced by the manufacturer, its service agent or a qualified electrician.

If the air is very dusty or dirty, an additional filter net may be considered to protected the evaporative cooling pads.

Use the correct line fuses, to prevent malfunction or fire.

For special applications, requiring accurate humidity and temperature controls, apply to professional consultants.

## Product Maintenance



*Make sure the power supply is cut off before cleaning and maintenance.*

***The proper using manner can extend the life span of product, and the periodical maintenance is necessary for the regular operation and high efficiency of the product during the daily running:***

Check and make sure that there is no any blockage around the product and the air outlet before start up of using season.

1 or 2 times of cleaning by “Clean” function of product are suggested to prevent the bacteria and smells inside the cooler.

Drain out the water and keep the product inside dry if long time not use in case of any mosquitos or damage caused by frozen.

The filter net and evaporative cooling pads are suggested to be clean every other week, to ensure the adequate air supply, follow below instructions when cleaning:

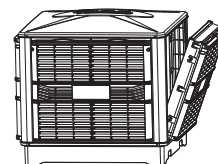


Fig.1

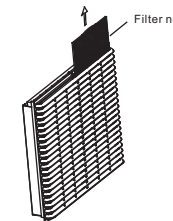


Fig.2

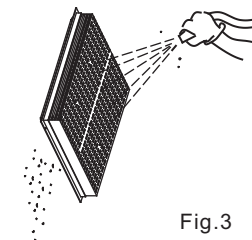


Fig.3

1. Screw off the bolts on the top of cooling pad set, pull upwards and then outwards to take out the cooling pad, rinse it with water. Do not brush or rinse the cooling pad with high pressure water in case of any damage. (As Fig.1 and Fig.3)

2. Pull upwards and take out the filter net, rinse it with water and clean with soft brush. (As Fig.2)

3. Put back the cooling pad and filter net into product and screw on.

1. Press “Timer” button for 3 seconds in standby mode, the time icon will be on and blink on the LCD displayer.
2. Press ▲ ▼ button to set the Auto-clean time interval 4h-8h-12h-24h-48.
3. Press “Clean” button again to save and exit.

**Swing**

Press “Swing” button to change the wind direction when machine running.

Note: Only available for machine with auto-swing air nozzle.

**Note:**

Factory reserves the right to make alterations to specifications, functions, dimensions etc, for production or other reasons with prior notice, which will be subsequent to publication.

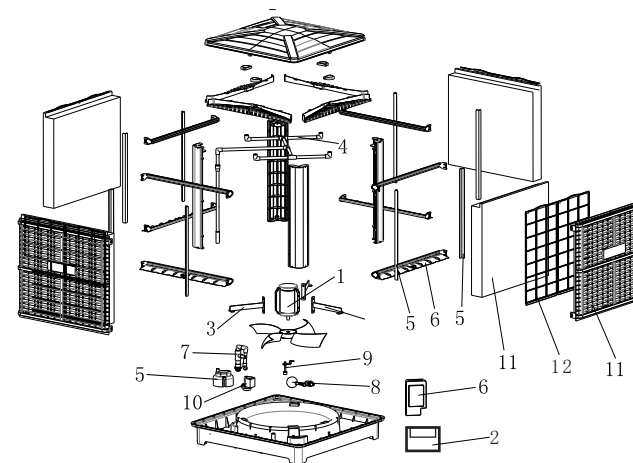
**Operation Principle and Applications**

The Evaporative Air Coolers are efficient, environment-friendly and energy-saving products, which will provide you with the comfort environment and fresh air.

The products work based on the principle of evaporative cooling and use high efficiency cooling pads as evaporation media. The fan drives air through the evaporative cooling pads, water driven by the pump circulates from top to bottom of evaporative pads. Heat is supplied by air to water which cause water evaporation and air cooling, water is added automatically as the water level inside the tank falls below the minimum level.

The product applications include:

- Manufacturing industries (machinery, textile, shoes, automobiles etc)
- Process industries (painting, coating, plating, cooking etc)
- Commercial areas (exhibition halls, markets, restaurants etc)

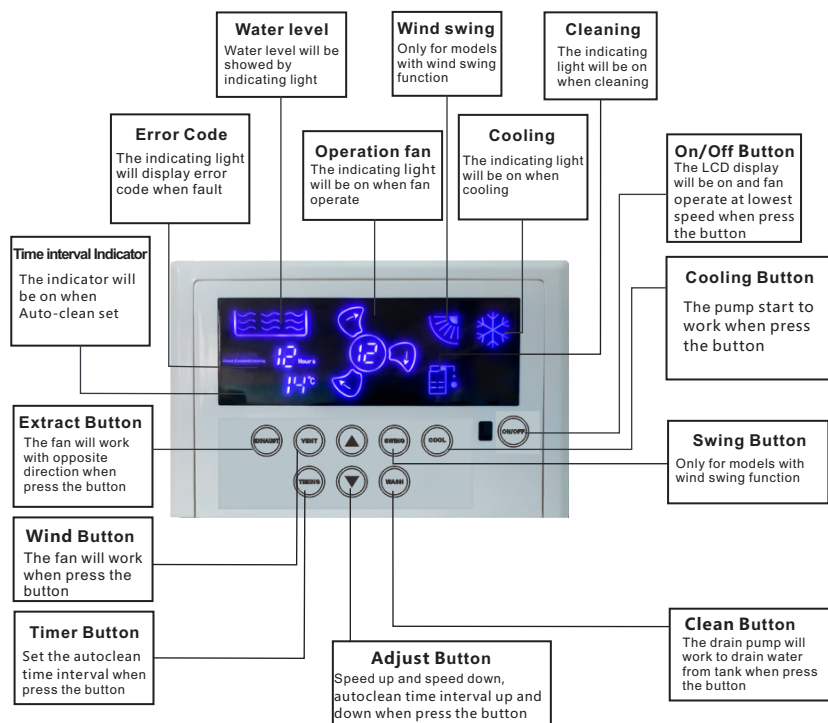
**Parts Identification**


S.N.	Spare parts	S.N.	Spare parts
1	Motor	7	Overflow pipe
2	Control Board	8	Floating ball valve
3	Motor Support	9	Water level sensor
4	Water distributor pipe	10	Drain pump
5	Water pump	11	Cooling pad completed
6	PCB box	12	Filter net

### Product Basic Information

Air Discharge Way	Max Airflow (CMH)	Effective Area (m <sup>2</sup> )	Power Consumption (kW)	Air Outlet Size (mm)	Net Weight (kgs)	Water Tank Capacity (L)
ZS/D1-18Y6	18000	100-150	1.1	590*428	105	240

### Control Panel (Adjustable Speed Model)



### Control Panel (Single Speed Model)



Remark: The functions of single speed model are the same with adjustable speed model, but without speed up and speed down function, and only single speed for both ventilation and extraction.

### Functions

#### ON / OFF

In STANDBY model press once and the fan will activate at the low speed with a “Beep” sound, the red light is on. Press button again will stop the operation with a “Beep” sound.

#### Fan Speed (▲▼)

In “Cool” mode (Cooling) or “Vent” mode, press ▲▼ to increase or decrease the fan speed.

*Note: Only available for adjustable speed model.*

#### Cool / Vent

In “Cool” mode, press “Vent” button to switch “Vent” mode, the water pump will stop working. In vent mode water pump and water level sensor are disabled.

In “Vent” mode, press “Cool” button to switch to “cool” mode, water pump starts to work. Water pump and water level sensor are enabled in “Cool” mode .

#### Extract

In Standby mode, press “Extract” button, the fan operates in an opposite direction at low speed.

In “Vent” mode, press “Extract” button, the fan will stop and operates in an opposite direction at low speed.

In “Cool” mode, press “Extract” button, the fan operates in an opposite direction at low speed and pump stop working.

*Note: The “Cool” function is unavailable in “Extract” mode.*

#### Clean

Press “Clean” button, the drain pump start to work and water will be drained out from water tank. The “Clean” function available when model is standby or running.

Machine will be in Auto-lean mode when “Clean” finished. Press the button to stop when cleaning.

#### Setting instructions for Auto-clean

Default setting from factory: OFF

Setting steps: