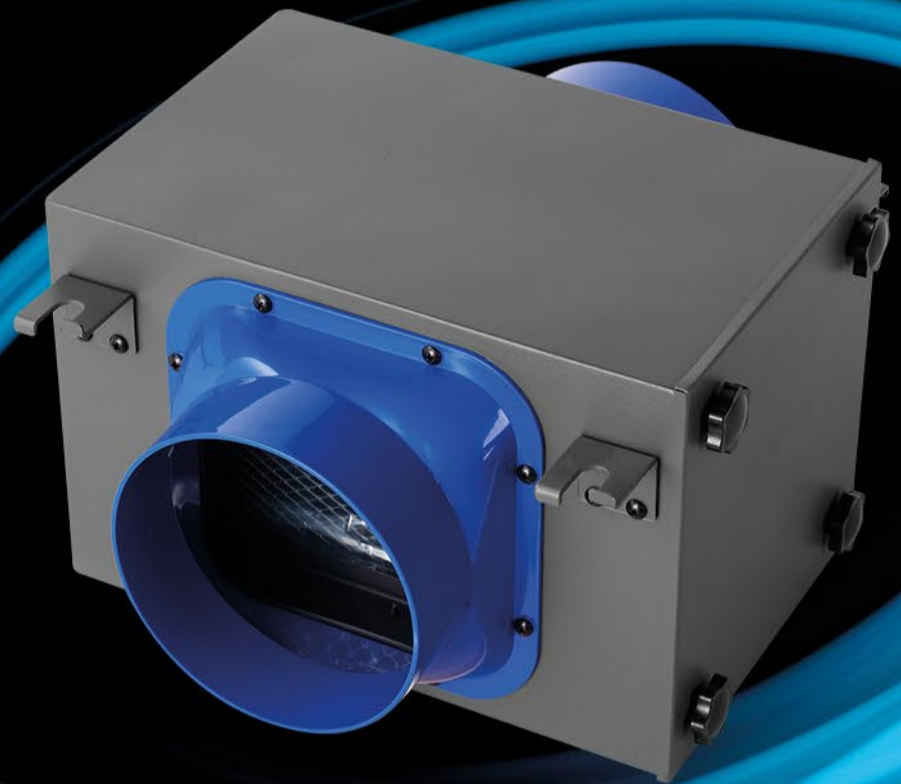


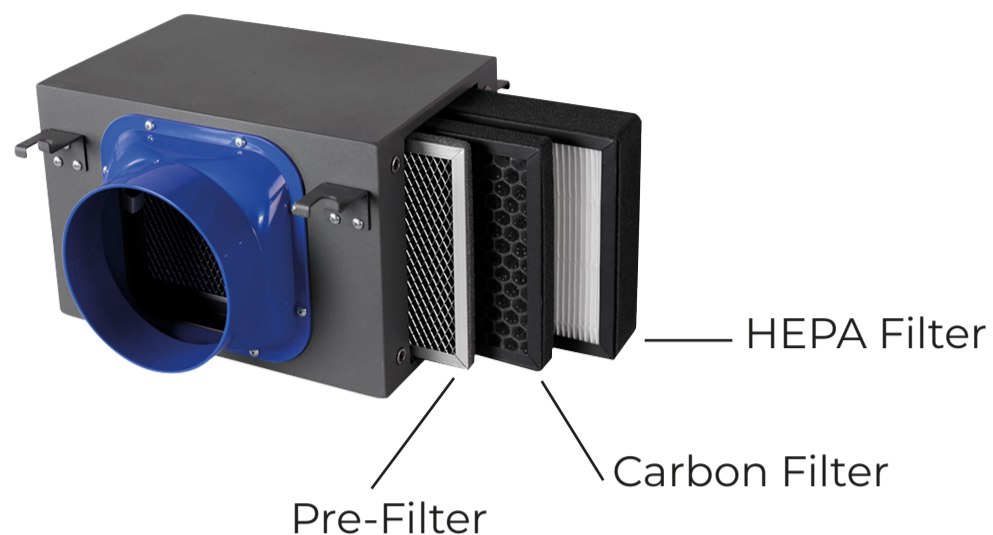
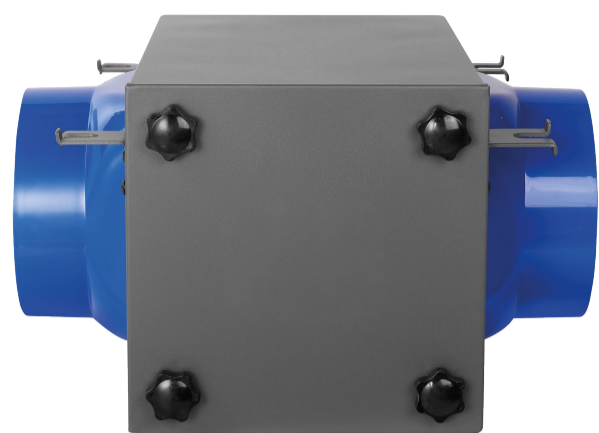


# CAISSON D'AIR A FILTRE 100

PRE-FILTER, CARBON FILTER, HEPA FILTER

100 - 150  
200 - 240





| <b>Model</b>                              | <b>GLX-100</b> | <b>GLX-150</b> | <b>GLX-200</b> | <b>GLX-250</b> |
|---|----------------|----------------|----------------|----------------|
| Taille du conduit<br>Φ(mm)                | 100            | 150            | 200            | 250            |
| Taille du boîtier (mm)                    | 300x200x200    | 300x200x200    | 430x300x300    | 430x300x300    |
| Débit d'air adapté<br>(m <sup>3</sup> /h) | 120-320        | 220-550        | 520-1500       | 1200-2600      |
| Réduction du<br>débit d'air               | 15-25          | 15-25          | 15-25          | 15-25          |
| Taux HEPA                                 | H13            | H13            | H13            | H13            |
| Pre-Filter                                | ✓              | ✓              | ✓              | ✓              |
| Carbon Filter                             | ✓              | ✓              | ✓              | ✓              |
| HEPA Filter                               | ✓              | ✓              | ✓              | ✓              |